

PETERBILT® 378 LONG HAULER



A1169-200



IMPORTANT! READ THESE POINTS BEFORE YOU BEGIN

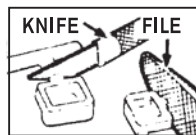
- 1 "TEST FIT" all parts before cementing. Trim excess plastic from parts before joining.
- 2 Cement all parts unless otherwise indicated by the instructions.
- 3 Use paint and cement made for styrene plastic only.
- 4 Paint all sub-assemblies before attaching chrome parts.
- 5 Scrape chrome and paint away from surfaces to be cemented together.
- 6 Follow all of the numbers on the instruction sheet beginning with number one.

TOOLS

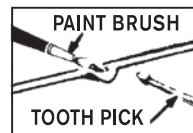
IMPORTANT NOTE: Do not remove parts from runners until ready to use.



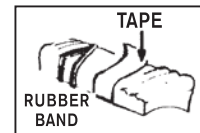
TWEEZERS
TO PLACE,
PICK UP
AND HOLD
SMALL PARTS.



KNIFE
TO REMOVE
AND TRIM
PARTS.
FILE
TO REMOVE
EXCESS
PLASTIC.



CEMENT
USE
TOOTH PICK
PAINT
BRUSH
OR PIN
TO
APPLY IT.



**TAPE,
RUBBER
BAND
AND
CLOTHES
PINS**
TO
CLAMP AND
HOLD PARTS
UNTIL THEY
ARE DRY.

PAINT COLORS

- | | | | | | |
|---------------------------|---------------------------|--------------------------|--------------------------|------------------------------|-----------------------------|
| A
FLAT
BLACK | B
SILVER | C
YELLOW | D
MED.
GRAY | E
CHROME
SILVER | F
FLAT
LEATHER |
| G
FLAT
RED | H
FLAT
WHITE | I
GUN
METAL | J
ORANGE | K
LIGHT
BLUE | BC
BODY
COLOR |

It is recommended that you search the internet for additional color references and details.



DRILL HOLES



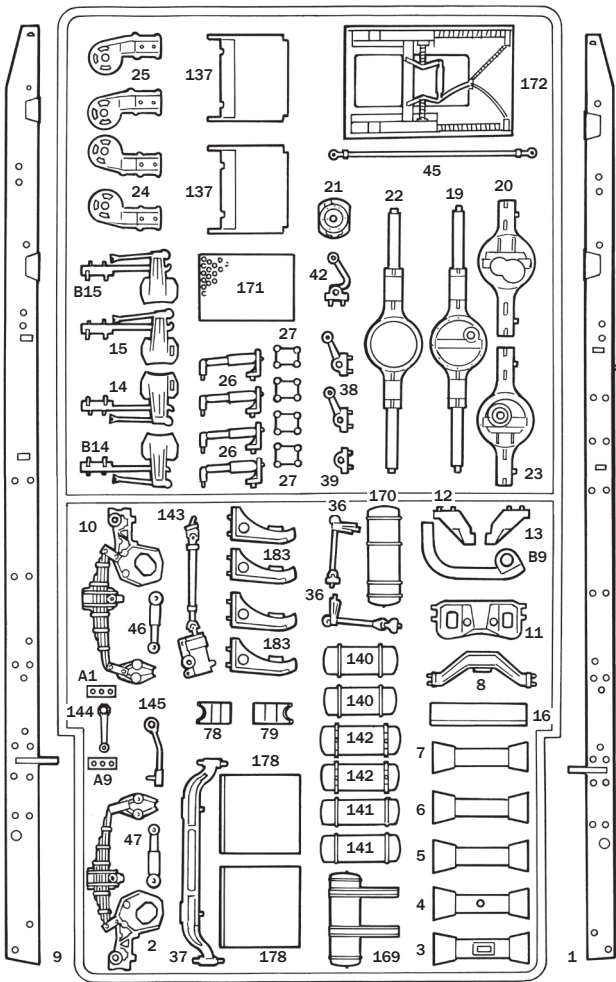
DECAL



RIVOT HOT

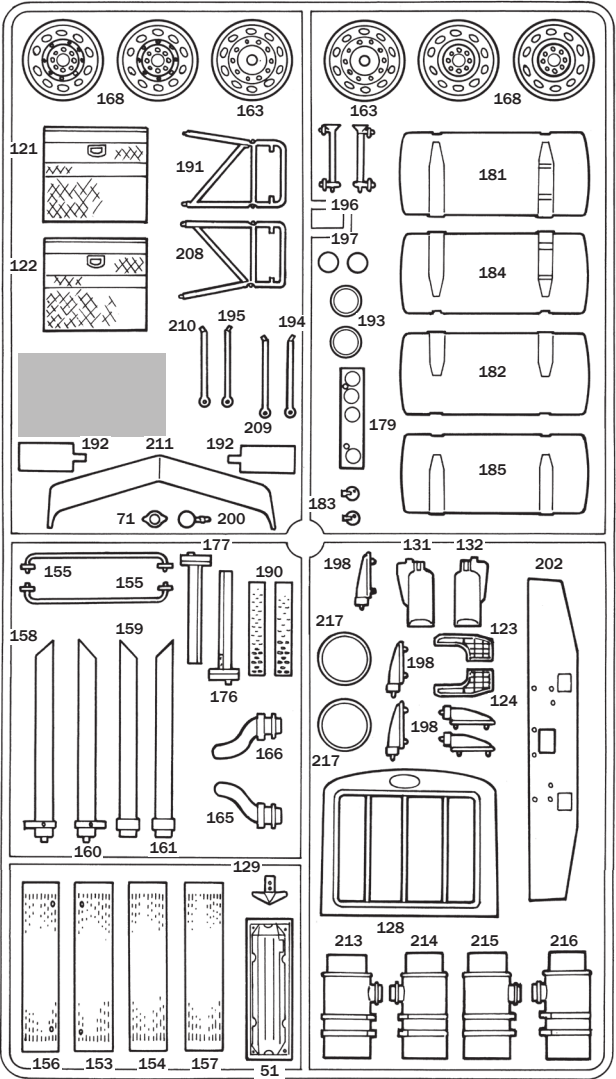
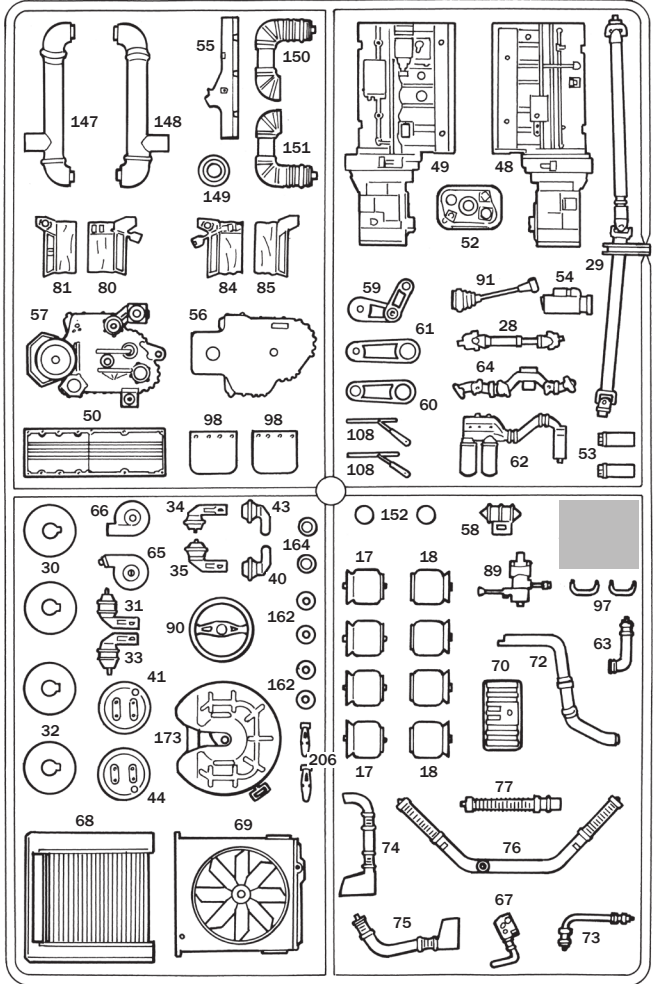
round2models.com

PETERBILT TRADEMARKS LICENSED BY PACCAR INC, BELLEVUE, WASHINGTON, U.S.A. AMT and design is a registered trademark of Round 2, LLC. ©2019 Round 2, LLC, South Bend, IN 46628 USA. Product and packaging designed in the USA. Made in Italy. All rights reserved.



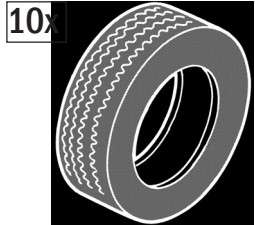
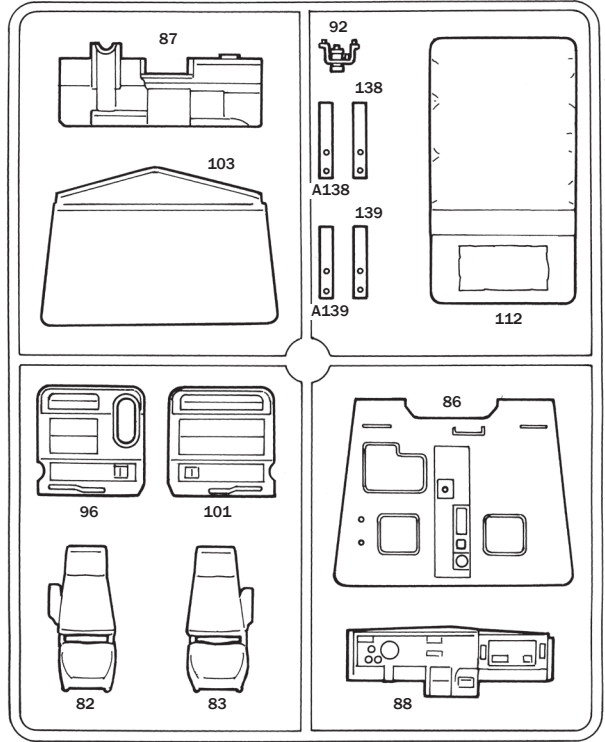
A

B

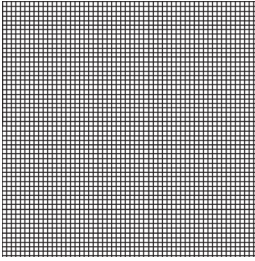


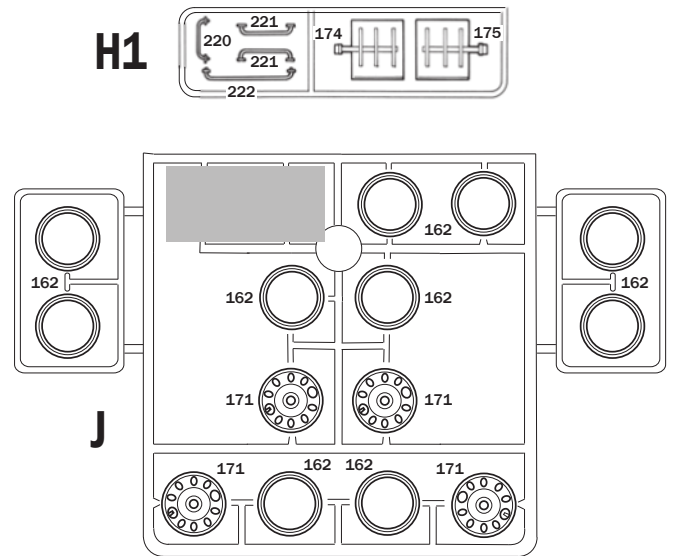
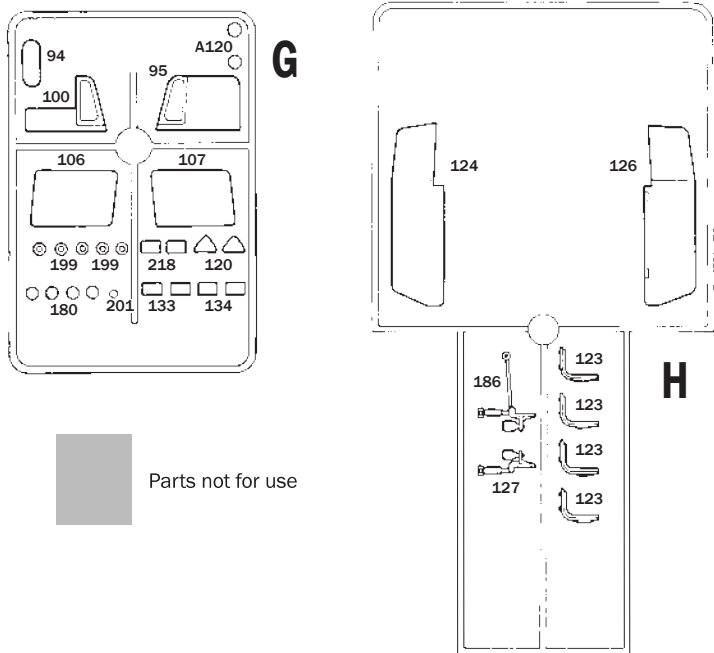
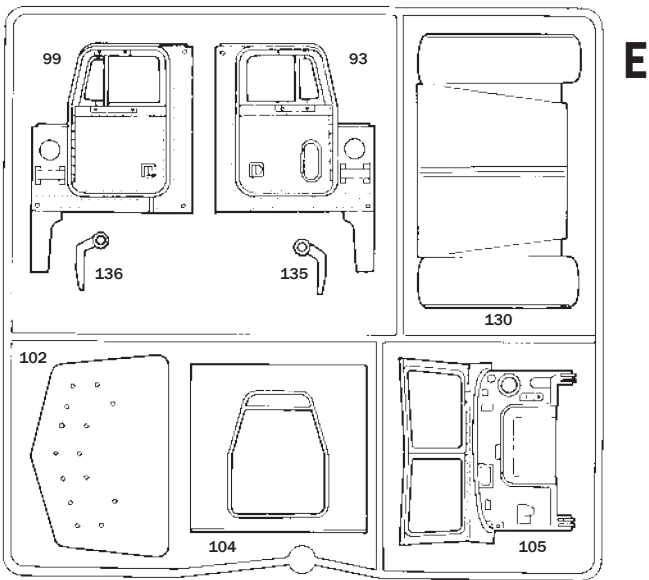
C

D



NET



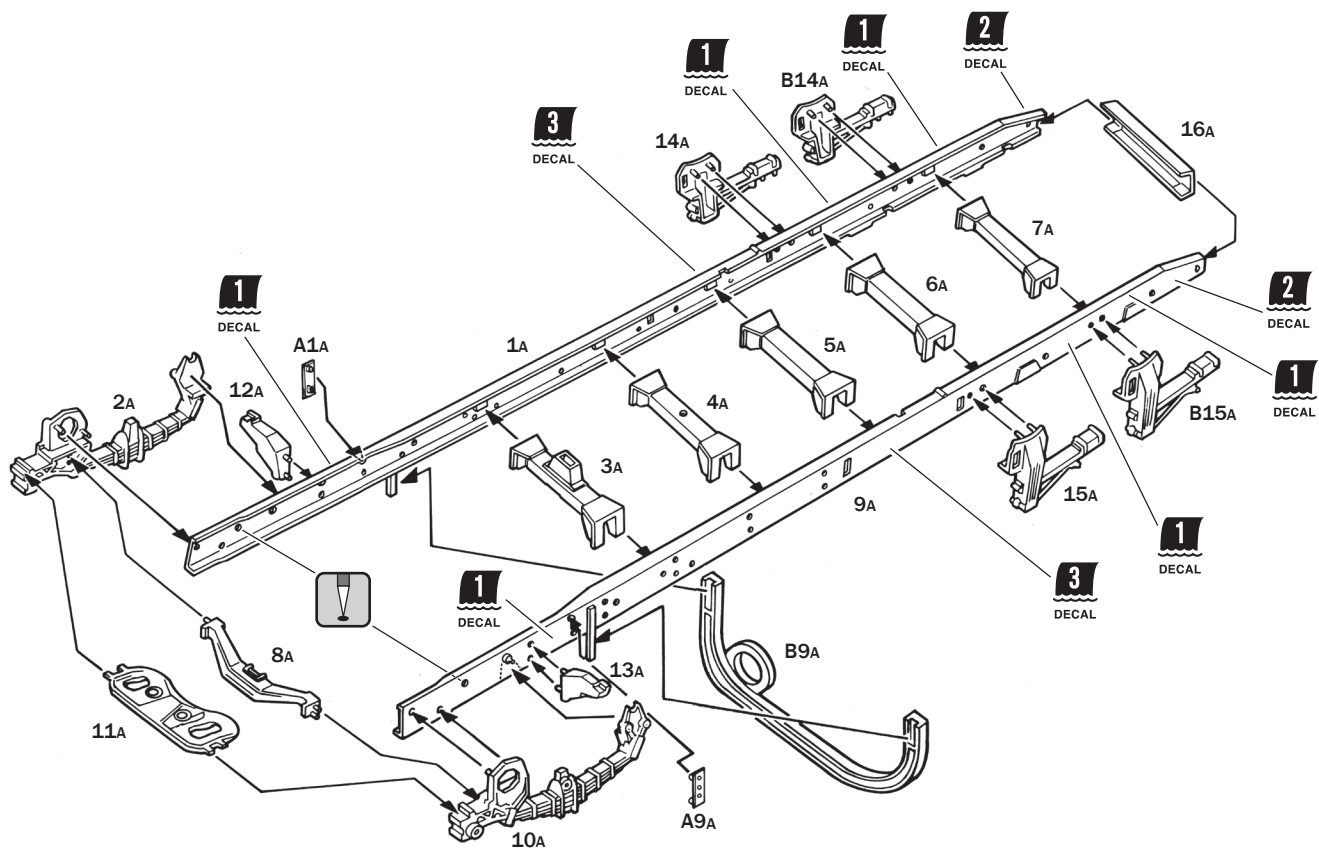


Parts not for use

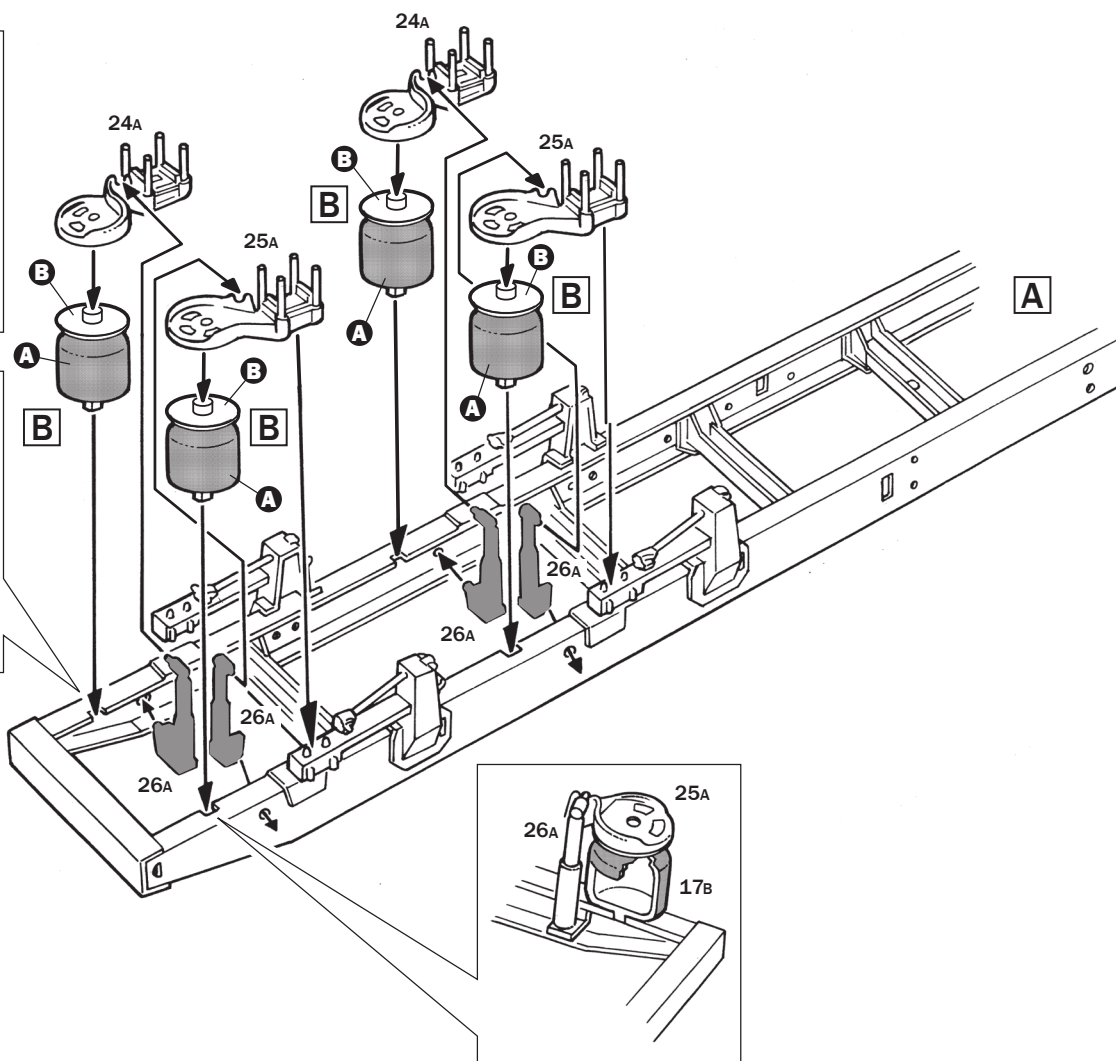
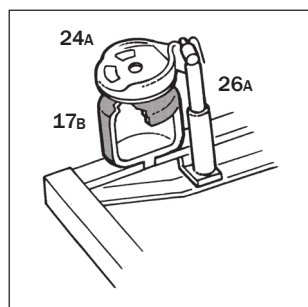
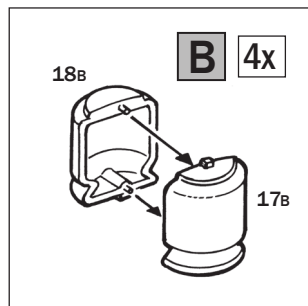


1

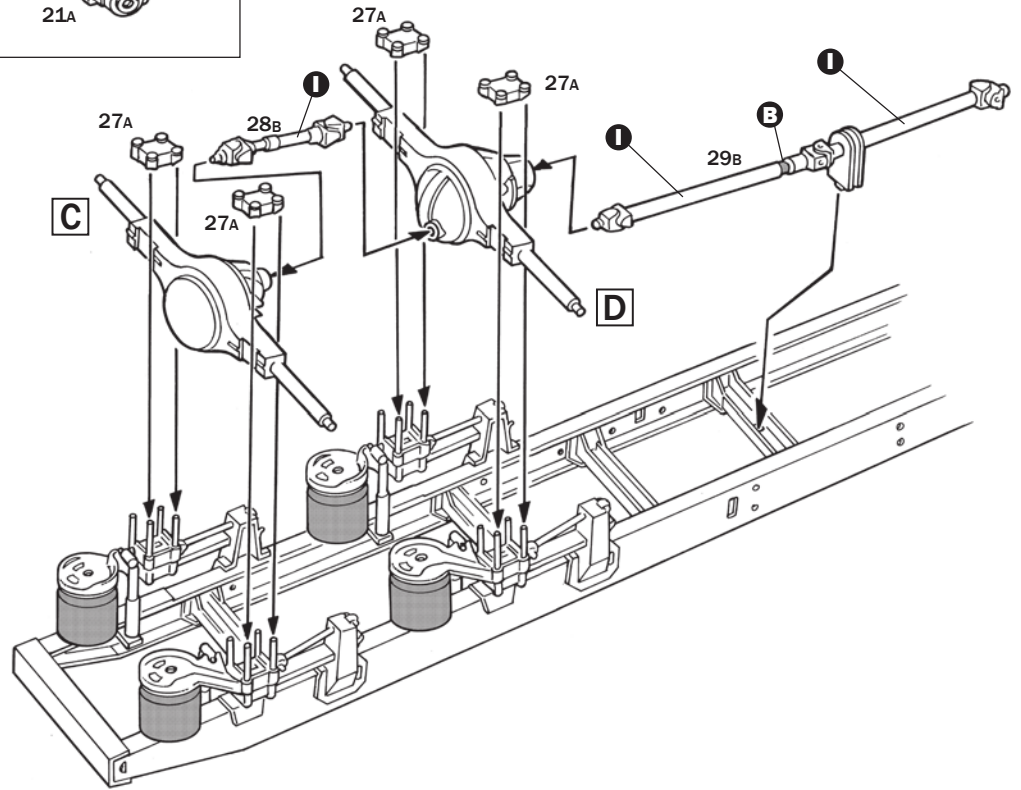
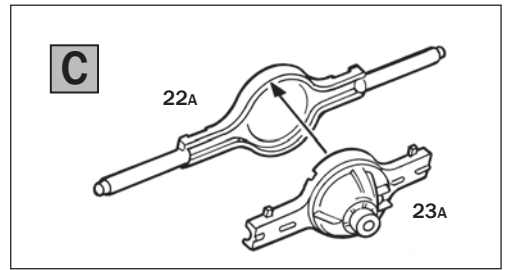
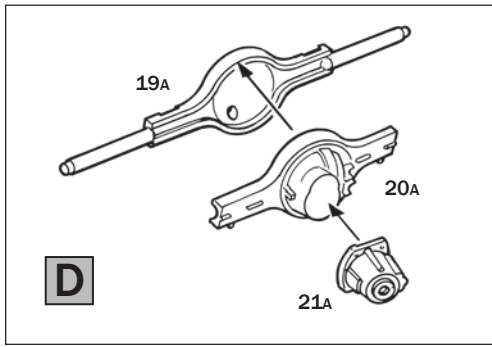
A



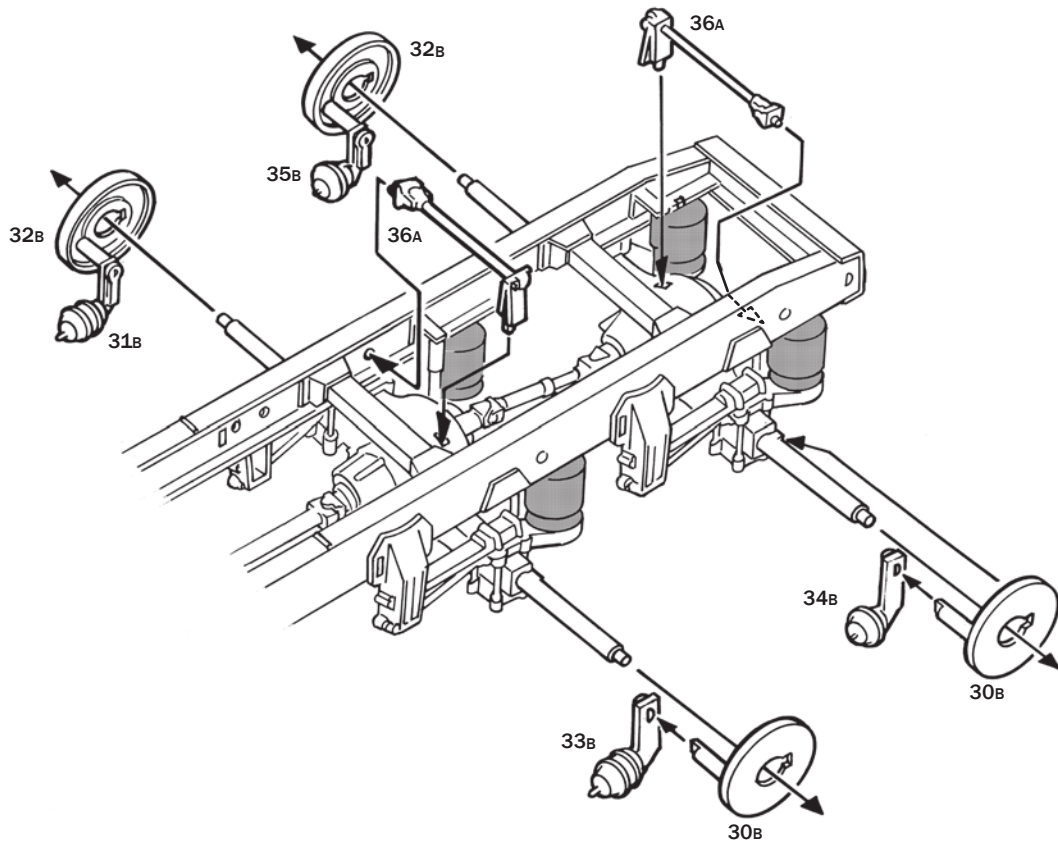
2



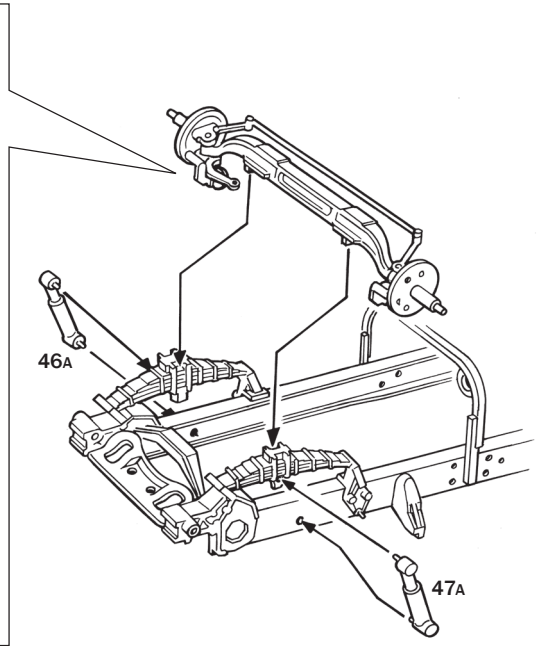
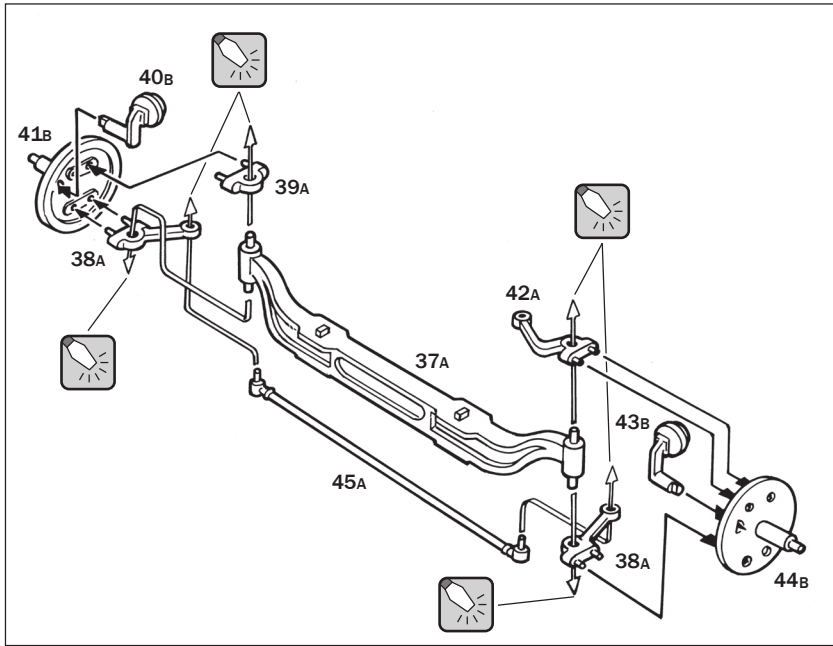
3



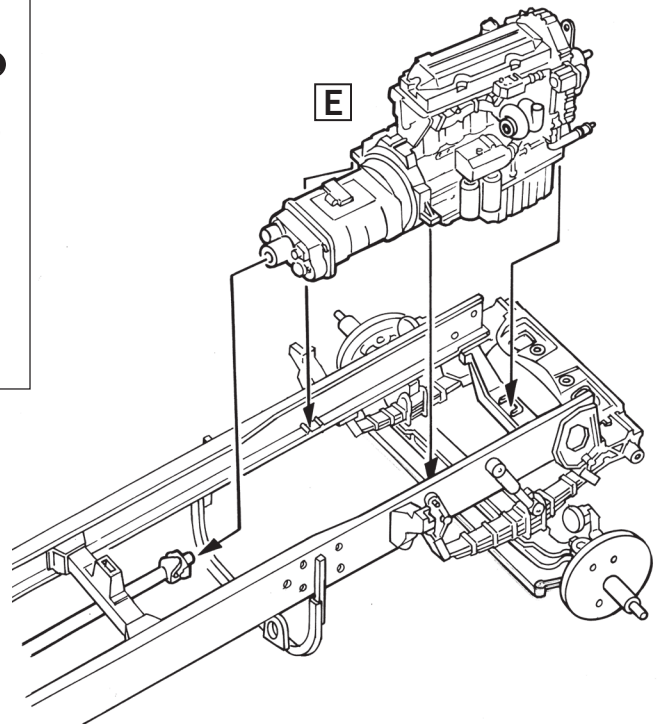
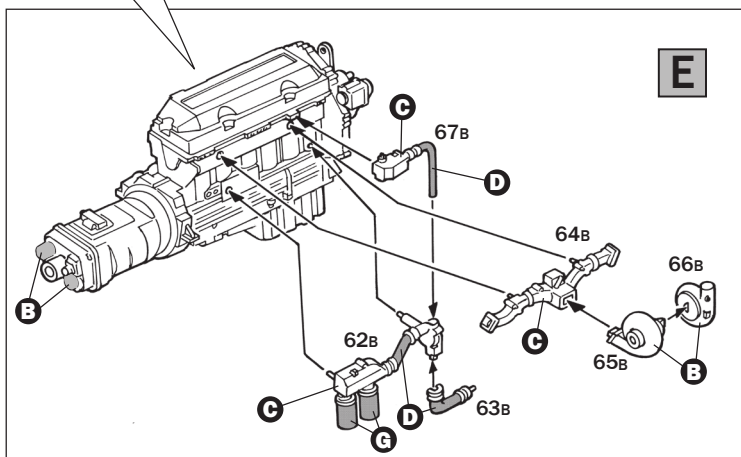
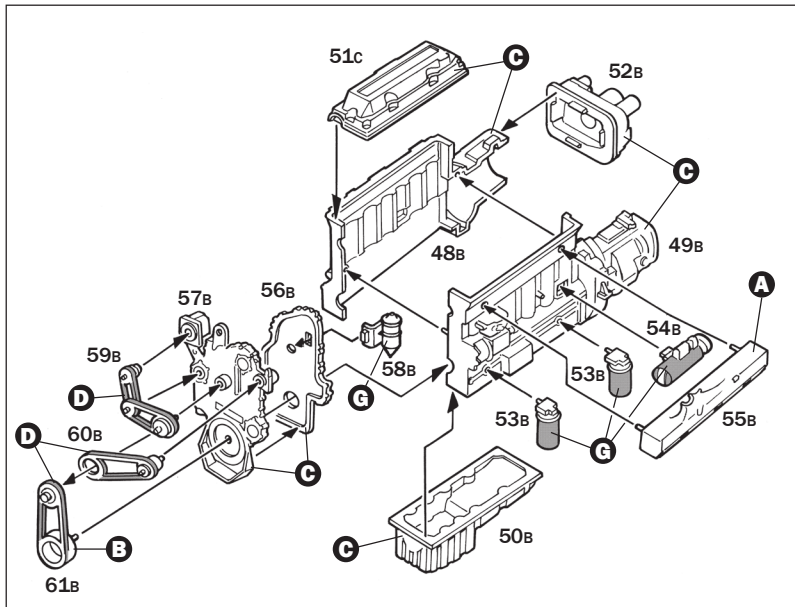
4

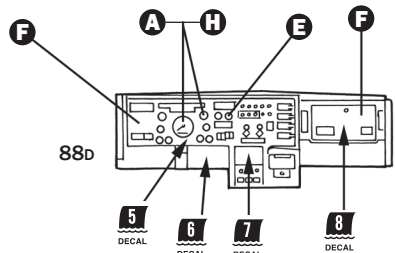
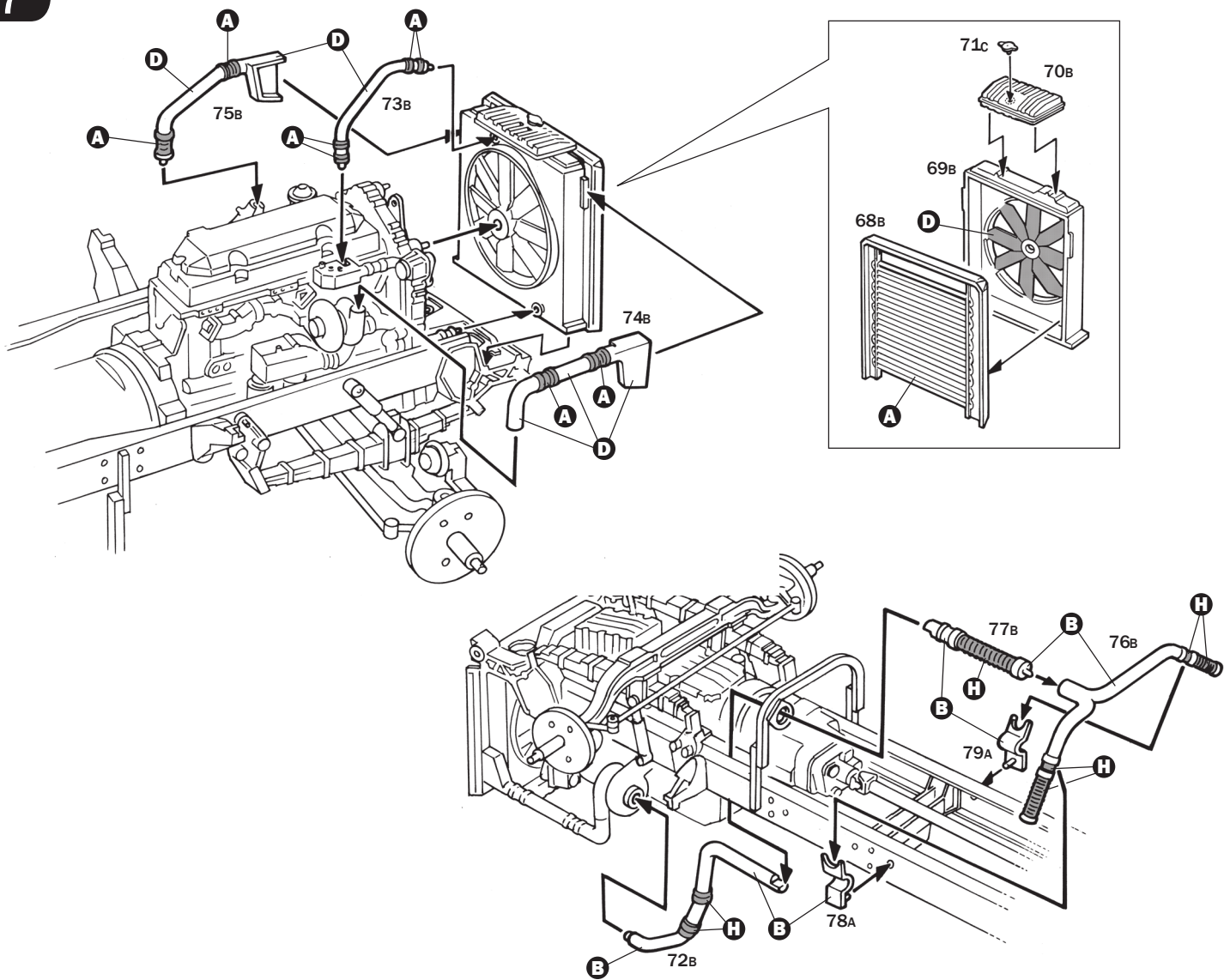


5



6





Note: sand off raised areas to use decals.

